



# How Safe Are Our Roads?



Metropolitan Police Department (DC) Assistant Chief Patrick Burke (at podium) helps launch Greater Washington's 2013 Checkpoint Strikeforce campaign at a Bullpen news conference held outside Nationals Park in Washington, D.C

Annual Data Report on the Impact of Drunk Driving on  
Road Safety in the Washington D.C. Metropolitan Region  
December 2013



Metropolitan Washington  
Council of Governments



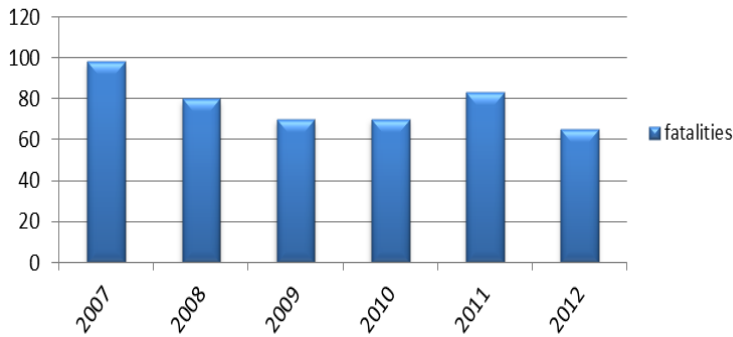
WRAP



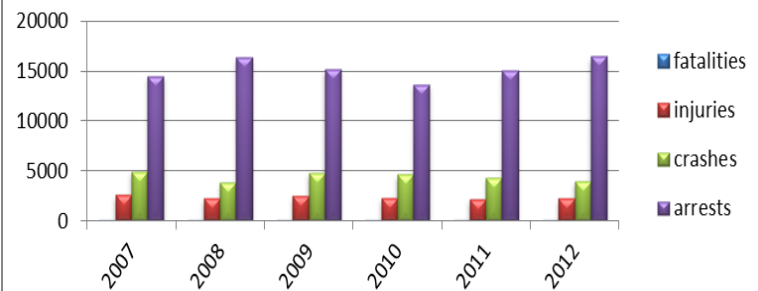
## 2013 How Safe Are Our Roads?

# A Look at Regional and National Figures

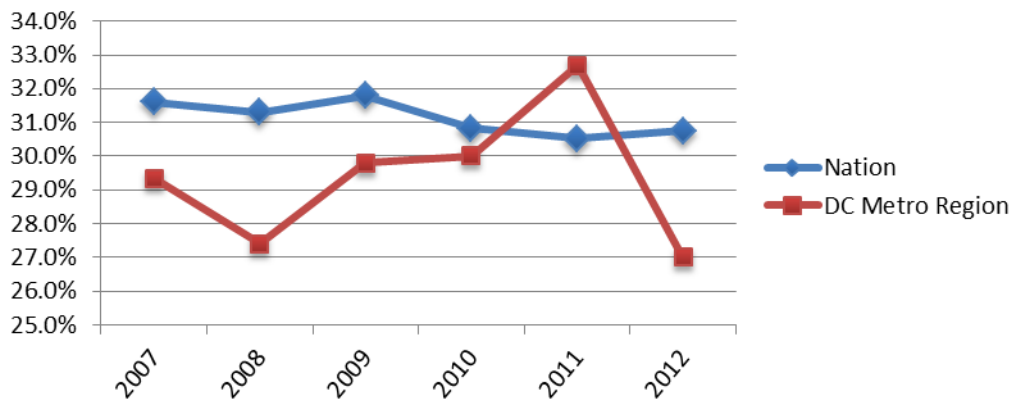
**Regional Alcohol-Impaired Fatalities with a BAC= .08+ 2007-2012**



**Regional Totals of Alcohol-Related Injuries, Crashes, Arrests with a BAC=.01+ 2007-2012**



**National and Regional Percentages of Alcohol-Impaired Traffic Fatalities with a BAC=.08+ 2007-2012**



The Metropolitan Washington Region has experienced a decrease in the overall number of alcohol impaired injuries, and crashes from 2011 to 2012. The region has seen an increase in the number of arrests, suggesting that policing efforts and prevention are taking effect.

Regional alcohol impaired traffic fatalities have decreased to 27.0% of total crash fatalities in the region, compared with 32.7% due to alcohol-impairment in 2011. Nationally, alcohol-impaired fatality rates stand at 30.8%.



WRAP



## 2013 How Safe Are Our Roads?

### How Safe Are Our Roads? 2012 Overview

Findings in the 2013 report include:

**FATALITIES:** Local alcohol and/or drug-impaired traffic fatalities **decreased** by 21.69% between 2011 and 2012 (from 83 to 65 such fatalities).

**INJURIES:** Regional alcohol and/or drug-related traffic injuries **increased** by 3.56% between 2011 and 2012 (from 2,220 to 2,299 such injuries).

**CRASHES:** Area traffic crashes attributed to alcohol and/or drugs **decreased** by 7.70% between 2011 and 2012 (from 4,402 to 4,063 such crashes).

**ARRESTS:** Local arrests for either driving under the influence (DUI) or driving while intoxicated (DWI) **decreased** by 3.89% between 2011 and 2012 (from 18,692 to 17,965 such arrests).

Of the Washington Metropolitan area's 230 total traffic fatalities for 2012, **65**, or 28.26% of these roadway deaths were due to drivers who were alcohol and or drug-impaired (BAC = .08+). National statistics (National Highway Traffic Safety Administration, NHTSA) show that 30.8% of total U.S. vehicular fatalities in 2012 were reported as alcohol / drug impaired (BAC = .08+).

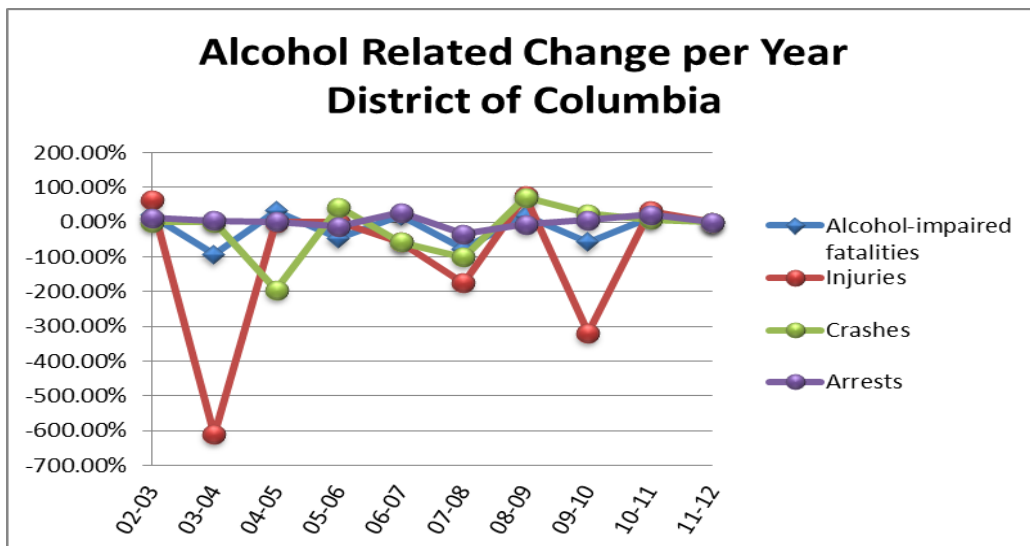
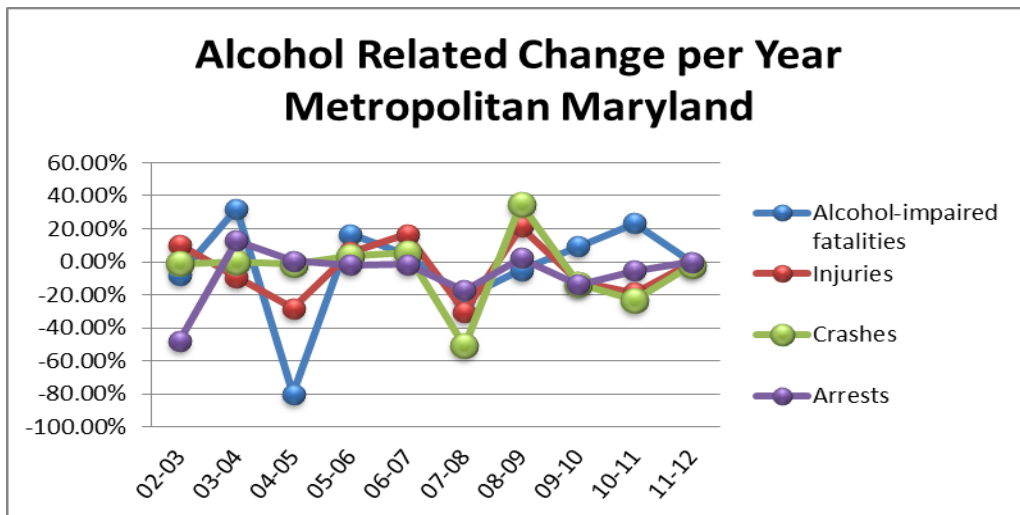
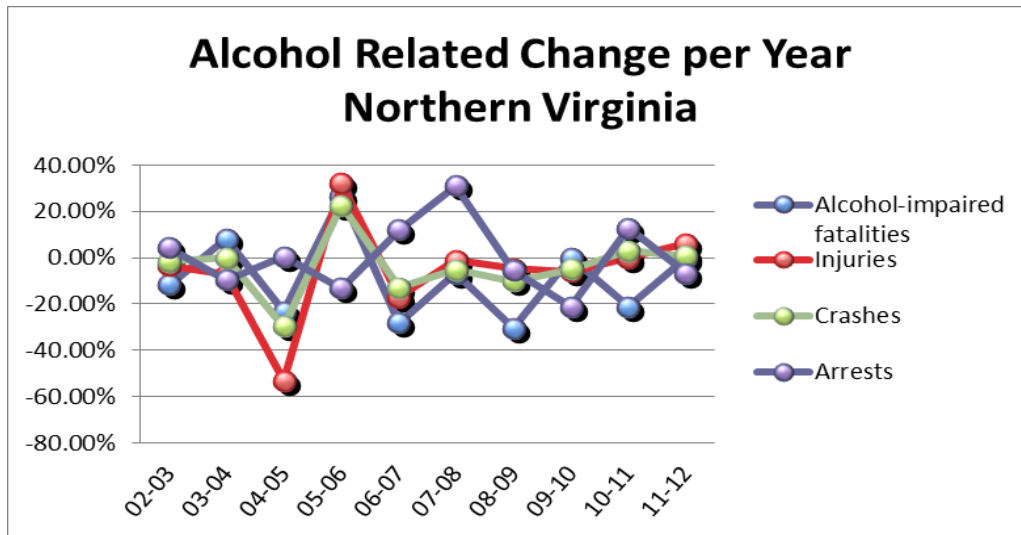
## Background

Data compiled in this report comes from national, state, and local sources including the U.S. Census Bureau, National Highway Traffic Safety Administration (NHTSA), and Virginia and Maryland Departments of Transportation. Primary data was collected from the local police departments of each jurisdiction.

It should be noted that the jurisdictional data in this report does not always include State Police data. The State Police in Maryland and Virginia are charged with enforcing traffic laws on state highways and interstate expressways; inclusion of this data would likely increase the number of incidents in all categories. It is possible that some jurisdictional data may include State Police figures because local police often respond to highway incidents when State Police are unavailable. In some jurisdictions, the data reported were provided by the state, and most likely include state police data.



## Sub Regional Trends



## Total Traffic Fatalities

Total Traffic Fatalities 2007-2012							
Year	2007	2008	2009	2010	2011	2012	Percent Change
							2011-2012
<b>District of Columbia</b>							
Washington	44	34	29	24	27	15	-44.4%
<b>Maryland</b>							
Montgomery County	48	51	39	47	40	36	-10.0%
Prince George's County	125	130	98	92	105	83	-21.0%
MD Regional Total	173	181	137	139	145	119	-17.9%
<b>Virginia</b>							
Arlington County	6	8	6	6	6	4	-33.3%
Fairfax County	54	29	37	35	45	46	2.2%
Loudoun County	21	11	13	12	11	17	54.5%
Prince William County	28	25	16	23	15	19	26.7%
City of Alexandria	5	4	1	2	3	4	33.3%
City of Fairfax	1	0	2	0	1	5	400.0%
City of Falls Church	0	0	1	2	0	0	0.0%
City of Manassas	2	0	3	0	0	1	N/A
City of Manassas Park	0	0	0	0	1	0	N/A
Northern Virginia Total	117	77	79	80	82	96	17.1%
<b>DC Metro Regional Total</b>	<b>334</b>	<b>292</b>	<b>245</b>	<b>243</b>	<b>254</b>	<b>230</b>	<b>-9.4%</b>
<b>National</b>	<b>41,259</b>	<b>37,423</b>	<b>33,883</b>	<b>32,885</b>	<b>32,367</b>	<b>33,561</b>	<b>3.7%</b>

\* The data on this table is based on the BAC of all involved drivers and motorcycle riders (operators only) reported by the National Highway Traffic Safety Administration's new definition on their 2012 Traffic Safety Facts reports.

# Alcohol-Impaired Traffic Fatalities

Alcohol-Impaired Traffic Fatalities by Jurisdiction with BAC=.08+ 2007-2012							
Year	2007	2008	2009	2010	2011	2012	Percent Change 2011-2012
DISTRICT OF COLUMBIA							
Washington	16	9	11	7	8	4	-50.00%
MARYLAND							
Montgomery County	10	13	11	13	20	11	-45.00%
Prince George's County	40	28	28	30	36	23	-36.11%
MD Regional total	50	41	39	43	56	34	-39.29%
VIRGINIA							
Arlington County	3	5	1	1	0	1	N/A
Fairfax County	15	12	11	8	9	12	33.33%
Loudoun County	6	5	4	3	4	6	50.00%
Prince William County	6	7	5	11	3	3	0.00%
City of Alexandria	2	1	1	0	1	2	100.00%
City of Fairfax	0	0	0	0	1	0	-100.00%
City of Falls Church	0	0	0	0	0	0	0.00%
City of Manassas	0	0	1	0	0	0	0.00%
City of Manassas Park	0	0	0	0	1	0	-100.00%
Northern Virginia Total	32	30	23	23	19	24	26.32%
<b>DC Metro Region Total</b>	<b>98</b>	<b>80</b>	<b>73</b>	<b>73</b>	<b>83</b>	<b>62</b>	<b>-25.30%</b>
National Parks in Region	0	1	1	4	0	3	N/A
<b>Regional Total Adjusted</b>	<b>98</b>	<b>81</b>	<b>74</b>	<b>77</b>	<b>83</b>	<b>65</b>	<b>-21.69%</b>
National	13,041	11,711	10,759	10,136	9,878	10,322	4.49%

\*The data on this table is based on the BAC of all involved drivers and motorcycle riders (operators only) reported by the National Highway Traffic Safety Administration's new definition on their 2013 Traffic Safety Facts reports.



## Injuries

Total Traffic Injuries by Jurisdiction 2007-2012							
Year	2007	2008	2009	2010	2011	2012	Percent Change
							2011-2012
DISTRICT OF COLUMBIA							
Washington	4,070	4,578	4,676	4473	5812	<b>6515</b>	12.10%
MARYLAND							
Montgomery County	6,905	6,624	6,758	6510	6095	<b>6051</b>	-0.72%
Prince George's County	7,771	7,099	6,786	6084	6422	<b>6411</b>	-0.17%
MD Regional total	14,676	13,723	13,544	12594	12517	<b>12462</b>	-0.44%
VIRGINIA							
Arlington County	1,201	1,288	1,227	1007	1,005	<b>1,252</b>	24.58%
Fairfax County	8,019	7,964	7,590	7600	7,767	<b>8,185</b>	5.38%
Loudoun County	631	1,717	1,681	1764	1,869	<b>1,837</b>	-1.71%
Prince William County	2,624	2,717	2,614	2741	2,826	<b>2,763</b>	-2.23%
City of Alexandria	1,403	1,492	816	614	601	<b>609</b>	1.33%
City of Fairfax	241	201	169	178	205	<b>243</b>	18.54%
City of Falls Church	40	141	264	193	183	<b>232</b>	26.78%
City of Manassas	288	270	327	328	447	<b>612</b>	36.91%
City of Manassas Park	18	20	17	26	24	<b>24</b>	0.00%
Northern Virginia Total	14,465	15,810	14,705	14451	14,927	<b>15,757</b>	5.56%
<b>DC Metro Region Total</b>	<b>33,211</b>	<b>34,111</b>	<b>32,925</b>	<b>31,518</b>	<b>33,256</b>	<b>34,734</b>	<b>4.44%</b>
National Parks in Region	675	669	731	826	555	<b>541</b>	-2.52%
<b>Regional Total Adjusted</b>	<b>33,886</b>	<b>34,780</b>	<b>33,656</b>	<b>32344</b>	<b>33,811</b>	<b>35,275</b>	<b>4.33%</b>



# Alcohol - Related Traffic Injuries

Alcohol-related Traffic Injuries by Jurisdiction with BAC=.01+ 2007-2012							
Year	2007	2008	2009	2010	2011	2012	Percent Change
							2011-2012
DISTRICT OF COLUMBIA							
Washington	264	96	385	92	137	139	1.46%
MARYLAND							
Montgomery County	484	405	497	488	379	393	3.69%
Prince George's County	787	572	741	617	551	530	-3.81%
MD Regional total	1271	977	1238	1105	930	923	-0.75%
VIRGINIA							
Arlington County	127	146	94	78	71	117	64.79%
Fairfax County	648	573	561	610	573	594	3.66%
Loudoun County	27	140	142	140	149	133	-10.74%
Prince William County	288	263	260	203	216	203	-6.02%
City of Alexandria	115	89	65	48	50	66	32.00%
City of Fairfax	22	8	13	6	15	14	-6.67%
City of Falls Church	0	2	11	3	6	16	166.67%
City of Manassas	16	15	35	25	29	43	48.28%
City of Manassas Park	6	1	1	1	3	0	-100.00%
Northern Virginia Total	1249	1237	1182	1114	1112	1186	6.65%
DC Metro Region Total	2784	2310	2805	2311	2179	2248	3.17%
National Parks in Region	43	42	38	62	41	51	24.39%
Regional Total Adjusted	2827	2352	2843	2373	2220	2299	3.56%

\* Data provided by MPD, US Park Police, VDMV, MD NSC





## Crashes

### Total Traffic Crashes By Jurisdiction 2007- 2012

Year	2007	2008	2009	2010	2011	2012	Percent Change
							2011-2012
<b>DISTRICT OF COLUMBIA</b>							
Washington	15,100	16,147	16,841	16739	18002	<b>18276</b>	1.52%
<b>MARYLAND</b>							
Montgomery County	12,460	11,925	12,311	11536	11093	<b>10562</b>	-4.79%
Prince George's County	15,060	14,289	13,777	13013	12818	<b>12049</b>	-6.00%
MD Regional total	27,520	26,214	26,088	24549	23911	<b>22611</b>	-5.44%
<b>VIRGINIA</b>							
Arlington County	2,649	2,596	2,205	2,192	2,494	<b>2,651</b>	6.30%
Fairfax County	17,152	16,318	14,233	13,726	14,580	<b>14,500</b>	-0.55%
Loudoun County	5,720	3,828	3,501	3,798	4,066	<b>4,164</b>	2.41%
Prince William County	5,852	5,520	5,148	4,984	5,221	<b>5,265</b>	0.84%
City of Alexandria	1,947	1,868	1,395	1,594	1,631	<b>1,711</b>	4.90%
City of Fairfax	817	616	678	655	650	<b>648</b>	-0.31%
City of Falls Church	243	177	249	190	180	<b>154</b>	-14.44%
City of Manassas	725	622	547	590	594	<b>610</b>	2.69%
City of Manassas Park	73	65	42	40	73	<b>63</b>	-13.70%
Northern Virginia Total	35,178	31,610	27,998	27,769	29,489	<b>29,766</b>	0.94%
DC Metro Region Total	77,798	73,971	70,927	69,057	71,402	<b>70,653</b>	-1.05%
National Parks in Region	2669	2568	2874	2762	2811	<b>2644</b>	-5.94%
Regional Total Adjusted	80,467	76,539	73,801	<b>71,819</b>	74,213	<b>73,297</b>	-1.23%



### Alcohol - Related Traffic Crashes

Alcohol-related Traffic Crashes By Jurisdiction 2007- 2012 with a BAC=.01+							
Year	2007	2008	2009	2010	2011	2012	Percent Change
							2011-2012
<b>DISTRICT OF COLUMBIA</b>							
Washington	264	132	448	594	645	<b>338</b>	-47.60%
<b>MARYLAND</b>							
Montgomery County	1,000	690	1,055	891	749	<b>737</b>	-1.60%
Prince George's County	1,406	905	1,398	1,271	1,006	<b>980</b>	-2.58%
MD Regional total	2,406	1,595	2,453	2,162	1,755	<b>1,717</b>	-2.17%
<b>VIRGINIA</b>							
Arlington County	281	248	200	213	218	<b>242</b>	11.01%
Fairfax County	1,051	1,029	951	919	903	<b>910</b>	0.78%
Loudoun County	194	248	211	210	230	<b>239</b>	3.91%
Prince William County	484	410	379	319	344	<b>337</b>	-2.03%
City of Alexandria	118	104	99	102	110	<b>97</b>	-11.82%
City of Fairfax	48	26	36	32	38	<b>27</b>	-28.95%
City of Falls Church	4	7	11	6	10	<b>12</b>	20.00%
City of Manassas	41	47	43	32	36	<b>34</b>	-5.56%
City of Manassas Park	15	6	2	8	12	<b>16</b>	33.33%
Northern Virginia Total	2,236	2,125	1,932	1,841	1,901	<b>1,914</b>	0.68%
DC Metro Region Total	4,906	3,852	4,833	4,597	4,301	<b>3,969</b>	-7.72%
National Parks in Region	109	94	88	92	101	<b>94</b>	-6.93%
Regional Total Adjusted	5,015	3,946	4,921	4,689	4,402	<b>4,063</b>	-7.70%

\* Data provided by MPD, US Park Police, VDMV, MD NSC



## Alcohol - Related Traffic Arrests

Total Alcohol Related Traffic Arrests by Jurisdiction 2006-2011

Year	2007	2008	2009	2010	2011	2012	Percent Change
							2011-2012
<b>DISTRICT OF COLUMBIA</b>							
Washington	2,224	1,655	1,555	1,648	2,081	<b>1,340</b>	-35.61%
<b>MARYLAND</b>							
Montgomery County	3,487	2,689	2,903	4,086	3,810	<b>3,892</b>	2.15%
Prince George's County	1,814	1,832	1,725	2,611	2,660	<b>2,688</b>	1.05%
MD Regional total	5,301	4,521	4,628	6,697	6,470	<b>6,580</b>	1.70%
<b>VIRGINIA</b>							
Arlington County	647	833	693	609	789	<b>963</b>	22.05%
Fairfax County	2,586	4,362	4,057	3,407	3,887	<b>3,343</b>	-14.00%
Loudoun County	690	1,175	1,133	939	847	<b>845</b>	-0.24%
Prince William County	1,935	2,811	2,699	2,394	2,856	<b>2,745</b>	-3.89%
City of Alexandria	567	559	501	348	412	<b>360</b>	-12.62%
City of Fairfax	184	182	175	187	202	<b>175</b>	-13.37%
City of Falls Church	48	66	90	72	121	<b>113</b>	-6.61%
City of Manassas	160	110	171	N/A	N/A	<b>N/A</b>	N/A
City of Manassas Park	178	60	124	N/A	N/A	<b>N/A</b>	N/A
Northern Virginia Total	6,995	10,158	9,643	7,956	9,114	<b>8,544</b>	-6.25%
<b>DC Metro Region Total</b>	<b>14,520</b>	<b>16,334</b>	<b>15,826</b>	<b>16,301</b>	<b>17,665</b>	<b>17,088</b>	<b>-3.27%</b>
National Parks in Region	634	614	593	689	1,027	<b>877</b>	-14.61%
<b>Regional Total Adjusted</b>	<b>15,154</b>	<b>16,948</b>	<b>16,419</b>	<b>16,990</b>	<b>18,692</b>	<b>17,965</b>	<b>-3.89%</b>



## Youth Data

Alcohol Related Crashes, Injuries, and Arrests for Persons Under 21 Years of Age By Region, 2012

	Crashes	Alcohol Related Crashes	Percentage of Alcohol-related Crashes	Injuries	Alcohol Related Injuries	Percentage of Alcohol-related Injuries	Arrests	Alcohol Related Arrests	Percentage of Alcohol-related Arrests
District of Columbia									
Washington	2918	338	11.58%	670	10	1.49%	230	23	10.00%
Maryland									
Montgomery County	721	43	5.96%	912	58	6.36%	5897	182	3.09%
Prince George's County	832	40	4.81%	1196	67	5.60%	8597	103	1.20%
MD Regional Total	1553	83	5.34%	2108	125	5.93%	14494	285	1.97%
Virginia									
Arlington County	235	19	8.09%	88	7	7.95%	2,093	18	0.86%
Fairfax County	2,787	138	4.95%	1,091	85	7.79%	15,554	218	1.40%
Loudoun County	913	38	4.16%	342	19	5.56%	3,831	60	1.57%
Prince William County	1,244	55	4.42%	477	31	6.50%	8,642	178	2.06%
City of Alexandria	216	12	5.56%	86	6	6.98%	1118	15	1.34%
City of Fairfax	156	4	2.56%	29	1	3.45%	1,155	11	0.95%
City of Falls Church	33	1	3.03%	31	0	0.00%	235	2	0.85%
City of Manassas	166	7	4.22%	98	8	8.16%	N/A	N/A	N/A
City of Manassas Park	10	1	10.00%	4	0	0.00%	N/A	N/A	N/A
Northern Virginia Total	5760	275	4.77%	2246	157	6.99%	32,628	502	1.54%
DC Metro Regional Total	10231	696	6.80%	5024	292	5.81%	47,352	810	1.71%
National Parks in Region	138	6	4.35%	33	5	15.15%	68	16	23.53%
Regional Total Adjusted	10369	702	6.77%	5057	297	5.87%	47,420	826	1.74%



## Methodology

Following is a listing of the agencies providing local jurisdictional data:

### District of Columbia:

Metropolitan Police Department  
U.S. Park Police

### State of Maryland:

MD National Study Center

### Virginia:

State of Virginia: Virginia Department of Motor Vehicles, 2011 Crash Facts  
Arlington County Police Department  
Fairfax County Police Department  
Loudoun County Sheriff's Office  
Prince William County Police Department  
City of Alexandria Police Department  
City of Fairfax Police Department  
City of Falls Church Police Department  
City of Manassas Police Department  
City of Manassas Park Police Department

### Definitions of Data-Related Terms

**NHTSA Alcohol-Impaired Driving Traffic Fatalities:** any fatality that occurs in motor vehicle traffic crash that involves at least one driver or a motorcycle rider (operator) with a BAC of .08 grams per deciliter or higher; This threshold does not consider the impairment status of non-occupants involved in fatal crashes, such as pedestrians or pedal cyclist.

**WRAP Alcohol-Impaired Driving Traffic Fatalities:** Any person who dies as result of a traffic crash involving alcohol with a BAC level .08 or higher

**WRAP Alcohol-Related Traffic Fatalities for Persons Under 21:** Any person under the age of 21 year who has died as result of an alcohol-related traffic crash involving a driver with a BAC level .01 or higher. This includes drivers, passengers, bicyclists, and pedestrians.

**Alcohol-Related Traffic Injuries:** where any driver, passenger, bicyclist or pedestrian is listed on the police report to be injured in an alcohol-related crash where the BAC = .01 or higher

**Alcohol-Related Traffic Injuries for Persons Under 21:** any person under the age of 21 who receives injuries because of an alcohol-related crash where the BAC = .01 or higher; this includes drivers, passengers, bicyclists, and pedestrians.

**Alcohol-Related Traffic Crashes:** the driver, passenger, bicyclist, or pedestrian is listed on the police report as drinking before the crash with a BAC = .01 or higher. At least one driver in the crash was reported to be under the influence of alcohol and/or other drugs.

**Alcohol-Related Traffic Crashes for Persons Under 21:** any person under the age of 21 who was involved in a traffic crash involving a driver with a BAC = .01 or higher. This data includes drivers, passengers, bicyclists, and pedestrians.

**Drunk Driving Arrests/Citation:** a general reference to those criminal cases that are called DUI, DWI, OUI, OWI or other acronyms that generally describe three types of cases:

-The driver is sufficiently impaired by alcohol, drugs or a combination of the two, and cannot drive safely, and has a BAC level of .01 or higher;

-The driver is a "Drunk Driver", as defined by the driver being above that state's legal limit of BAC .08;

-A driver under the age of 21 is under the influence of alcohol at a BAC level of .02 or higher

**DWI/DUI Arrests:** a driver is listed on the police report as arrested for operating a motor vehicle under the influence of alcohol with a BAC level of .01 or higher

**DWI/DUI Arrests for persons under 21:** any person/driver under the age of 21 listed on the police report as arrested for operating a motor vehicle under the influence of alcohol with a BAC level of .01 or higher

### Data Analysis

The findings in this report are based on data collected from organizations and agencies from across the Washington Metro region. Data tables provide totals within the Washington Metro region as well as individual jurisdictions. Analysis focuses on changes in motor vehicle fatalities, injuries, crashes, and arrests. Results are reported as numbers and percentage of alcohol-related incidents to total numbers across time.

### Data Limitations

It is important to note limitations that affected collection and analysis of this data, as they may limit comparability across jurisdictions and influence the level of reasonable analysis. Whenever possible, limitations are noted within the tables and figures. It is important that the reader keep the following in

mind:

It should be noted that the researchers constructing this report utilized data from the National Study Center for Trauma and EMS (NSC) at the University of Maryland, for data pertaining to crashes, injuries, and arrests. Regarding the alcohol-related crash and injury data, the variable identifies a driver or pedestrian under the influence of alcohol, drugs, both, or none. Within the NSC data reported, researchers analyzed drivers reported as under the influence of *alcohol or both*, to capture alcohol-related crashes and injuries. This is different than the impaired definition from last year that also included the drugs attribute. That variable is created using several others on the report (such as driver condition, BAC, etc) so it does not specify only those with BAC 0.01+, and comparisons to previous year's data should be made with caution. In addition, because this report tracks just two jurisdictions in Maryland, regional totals could also be affected.

Additionally, there is no standardization for data definitions, collection, or recording within the Washington Metro region. Each agency has its own system of data collection, coding, and management. In addition, the range and type of data collected may not be consistent across jurisdictions. The data reported and analyzed in this report reflect data as reported by contact agencies. Independent verification of data to ensure accuracy is not within the scope of this report.

Information on data collection and management systems and changes within jurisdictions was not solicited. In addition, changes in laws or judicial priorities may result in increased attention to specific data (e.g. blood alcohol level in driver fatalities related to stricter server laws). In some cases, this may result in missing data or data that appears inconsistent when examined against the same values for previous years. It is beyond the scope of this report to identify data methodology or priority changes for each jurisdiction.

Data on alcohol-related driver involvement in motor vehicle fatalities, injuries, crashes and arrests was requested for alcohol-related (BAC= .01+) only. Therefore, data are assumed to reflect only alcohol impairment and are reported in this way, although some cases may involve drug use.

The number of incidents, total and related to alcohol impairment, is very small for some jurisdictions. Due to the small numbers, jurisdictional analysis might easily misrepresent the problem. For example, an increase of one alcohol-related fatality would have little impact in a jurisdiction that saw 50 alcohol-related fatalities the previous year, but would appear to represent a significant change in a small jurisdiction with only one or two alcohol-related fatalities the previous year.

Data are reported and analyzed by absolute numbers only. At this time, information that would allow identification of comparable rates is unavailable. It is assumed that people involved in motor vehicle crashes and arrests may live within or outside the Washington Metro region. Collection of data on driver or passenger residence versus jurisdiction of accident is beyond the scope of this report. Calculating rates based on the Washington Metro region's population or number of licensed drivers would not accurately represent the problem since drivers may be from outside the jurisdiction.

Data on people under the age of 21 years is collected in an inconsistent manner among jurisdictions. Caution must be used in evaluation of this data due to varied definitions and missing data.

Many charts display two regional total numbers. The first, "DC Regional Total" is the total of the District of Columbia, the Maryland Region, and the Northern Virginia Region. The second regional number, "Regional Total Adjusted" includes data from the United States Park Police. Because the Park Police information has only been recently collected, it is shown separately and the two regional totals are shown so that comparisons with previous years can be done.